

# Gates to Soul Wisdom

*Created by*  
*Marije Miller*

Copyright © 2020 Marije Miller

Published and distributed by Connecting New Dots LLC. All content and artwork is copyrighted, and may not be reproduced by any means, electronic or otherwise, without first obtaining the author's permission.

All rights reserved. No part of this guidebook may be reproduced by any mechanical, photographic, or electronic process, nor may it be stored in a retrieval system, transmitted or otherwise be copied for public or private use - other than for "fair use" as brief quotations embodied in other articles and reviews - without prior written permission of the publisher. The author and publisher assume no legal responsibility for any actions taken as result of the suggestions of the cards.

## **TABLE OF CONTENTS**

Welcome	<b>5</b>
What is Human Design?	<b>10</b>
Layouts	<b>14</b>
Foundation Cards	<b>28</b>
Insight Cards	<b>44</b>
Resolve Cards	<b>112</b>
About the Deck	<b>122</b>





# *Welcome!*

This **Gates to Soul Wisdom** Oracle Deck offers a way to access your innate intuition. It is designed to give you some of the depth of certain ancient knowledge systems in an easy to apply and practical way.

An Oracle is a way to delve into your own subconscious and connect you with Spirit / the Universe / your Guides. It is not meant to 'tell the future' (though it might!), but to provide insights and opportunities for growth, and help develop trust in your own intuition.

In this Oracle you'll see a set of different aspects that provide you with insights and possibly even specific answers. Some answers will immediately be clear, while at other times you may have to hold the cards' guidance in your heart before a sudden realization drops in. You may find yourself walking

in nature, pondering a particular issue, when all of a sudden, a card's message becomes clear. Be open to the magic of your own intuition and of your subconscious to be revealed in its own timing.

### **The cards are divided in three sections:**

**Foundation Cards:** The Foundation deck consists of nine cards, which are based on the centers of the ancient Chakra System. Each chakra center has a particular area or function for how you engage with your environment. Each of these cards has a Sanskrit symbol at the center top of the card. If you are familiar with the traditional Chakra System you are aware of the 7 centers running from the base of the spine all the way up to the top (and out) of the head. In this deck, we use an expanded 9-centered system. According to Human Design lore, two new centers were activated as humanity evolved: the Solar Plexus

split into two centers, adding the Spleen, and the Heart was split out of the Self. This is why the cards have the Sanskrit symbol for the Spleen depicted as the mirror image of the Solar Plexus, and the Heart has the mirror image of the Sanskrit symbol for the Self. Drawing one of these nine cards tells you about the foundation or root of the issue.

**Insight Cards:** These cards reflect the Hexagrams of the I Ching. Known as The Book of Changes, this information has evolved since its inception, believed to be around 1000-750 BC. In this Oracle, drawing one of the 64 Insight cards will give you more insight into the issue or situation, as well as give a suggested intention or affirmation you can hold as you move through your day. You'll also find the astrological zodiac symbols on the cards, which in the Human Design system correspond to each Hexagram.

**Resolve Cards:** The Resolve Cards, connected to the Elemental wisdom of Fire, Water, Earth, Air, Ether, and the energies of Diamond and the Moon, offer a particular way in how to approach or manage the many decisions we face in life. You can find the elemental symbol at the top right on each card. In this Oracle, drawing one of the seven Resolve cards offers you a specific way to approach the situation you are considering.

In this oracle the words Universe and Spirit are used interchangeably. I have attempted to make the cards as gender inclusive as possible.

We are now at a turning point, where we have the opportunity to bring many spiritual perspectives together with practical guidance. We are called to live our Highest Truth, to shine brightly and bring our individual gifts and strengths to a world that is

currently deeply divided and, in terms of our climate, reaching a point of no return.

Our world needs you, and we all need our world. This oracle is therefore an offer to support each and every one of us in living our purpose and bringing more kindness and compassion to ourselves, and by extension into the world at large.

# *What is Human Design?*

This body of wisdom came through ('downloaded') via Ra Uru Hu on January 4, 1987 on the island of Ibiza. A Voice took over and for 8 days and nights Ra received information that combined several wisdom systems in one: Astrology, the Chinese I Ching, the Hebrew Kabbalah, the Hindu Chakra System, genetics, and quantum physics. Each of these wisdoms individually came into the world at a specific time to highlight a particular perspective or guiding light that was needed then. We are now at a point in time where all these systems combined can provide us with the specific insights needed for this time on our planet.

Traditionally, as with Astrology, Human Design uses a person's birth information to create a birth chart. This chart shows our exact 'way of being' at the center of our own Universe, surrounded by the planets and stars at the moment of our birth. Very

often, just seeing this visual chart draws a person in and an initial transmission happens: though you may not know or understand your Design, there is a deeply personal energetic communication that occurs when you first lay eyes on your own Design.

When you experience a full chart reading you learn about the particulars of what makes you you, such as how your energy flows, how you attract opportunities into your life, and how to trust your specific blend of intuition. It can help you recognize the opportunities that are showing up for you in your life and determine which are the right ones for you to engage with.

This is all based upon your Type, a specific configuration in how your energy moves within your Design. There are many components in a chart that add more nuanced levels, down to the nitty gritty of how you tend to respond to certain influences. For instance, it might tell you whether you are the kind of person who likes to start new things, whether you like

to travel, how important your environment is when you want to accomplish something, or even how you mesh with the people closest to you!

There is much information available to learn about your own Human Design; you can request your free chart and learn more at **[www.connectingnewdots.com](http://www.connectingnewdots.com)**.





# *Layouts*

There are many ways to use this Oracle; I encourage you to be playful and curious in discovering the ways that resonate most for you. Use your own imagination to tap into your inner knowing to reveal its messages. Below are some suggestions for using the cards.

## **A note about shuffling the cards:**

It may seem strange to add a note about shuffling cards. First of all, however you choose to shuffle your cards is up to you. That said, the ritual of shuffling Tarot or Oracle Cards allows you time to think about the issue you would like to have clarity on. First determine which layout to use, as some layouts will ask you to divide the deck first, and others will use the whole deck. One thing you could ask, is, “what do the

cards want me to know about this issue?” Or, “what should I focus on?”

I suggest shuffling the cards by using an overhand technique, instead of riffing them, as that might damage the cards. This is the time you are attuning to your cards. Shuffle the whole deck. Once you feel an inner shift letting you know you have shuffled enough, place the cards in a stack in front of you. Take two-thirds from the top and place it to the left of the bottom stack. Take half of the largest stack and place it to the left of the stack. You now have three stacks.

Take the middle stack and place it on top of the left stack; then take that stack and place it on top of the first stack.

## PROBLEM SOLVING

This method is especially helpful in solving an issue or to quickly gain perspective on a challenge in your life. To start, separate the deck in its three categories (see above): **Foundation** cards, **Insight** cards, and **Resolve** cards.



First, shuffle the **Foundation** cards while thinking of the issue or challenge at hand. Cut the cards into three stacks, restack them and pick the top card.

Second, shuffle the **Insight** cards, again thinking of the issue or challenge. Again, make three stacks, restack them and pick one card and place it face down to the right of the Foundation card.

Third, shuffle the **Resolve** cards, thinking of the issue or challenge. One more time, make three stacks, restack them and pick one card and place it to the right of the Insight card.

Turn each of the cards over and read the descriptions.

- The **Foundation** card highlights what the issue is based on, or what is really going on.
- The **Insight** card expands on the issue and offers insight and perhaps a deeper perspective.
- Finally, the **Resolve** card provides a way to manage the situation and proceed moving forward, bringing the focus on proactive self-reliance.
- If you so desire, another **Insight** card may be drawn to indicate the potential outcome.

## **DAILY CARD**

Shuffle all the cards together and ask the cards to provide guidance in setting an intention or attitude to hold for the day. Stack and restack the cards as described above and pull one card for your message of the day. Alternately, as you shuffle, one card may jump out or fall to the ground. I often feel that those cards have a particular urgency for me to pay attention to the message they provide. When drawing daily cards, it can be especially useful to maintain a journal on the cards for a period of time, allowing you to notice specific themes for that phase of your life.

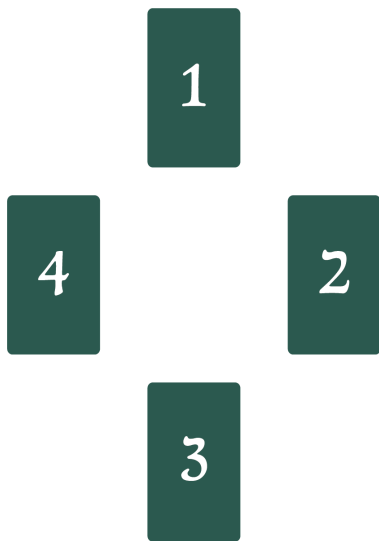
## YES OR NO QUESTION & ANSWER

Separate cards 29 and 49 from of the **Insight** Cards. Shuffle both of these cards and ask your 'yes' or 'no' question. Card 29 (Commitment) signifies Yes, Card 49 (Revolution) signifies No.

Alternately, use a pendulum to determine the answer. Determine which movement means 'yes' or 'no'. For me, if my pendulum describes a circle, it is an affirmation; when the pendulum moves in a line from side to side, it signals 'no' or 'not now'. Hold the pendulum over each of the two cards as you think of the issue and watch how the movement describes the current potential future or best action to take.

## **MOON PHASES**

On the New Moon, shuffle the cards and pick one card for each of the phases of the moon for the coming month. It is especially helpful to write the cards you pulled in a journal for keeping track throughout the month.





### **1. *New Moon***

Shuffle the **Foundation** cards and spread them out face down. Pick one and lay it in front of you. What is your area of focus for this month? The Universe will offer opportunities to experience growth in this area of your life during this time.

### **2. *First Quarter Moon***

Shuffle the **Insight** Cards and spread them out face down. Pick one and lay it clockwise to the right of the first card. This provides insight into how your growth will progress this month. The affirmation during this time will be especially helpful.

### **3. *Full Moon***

Next, shuffle the **Resolve** Cards. Spread them out face down. Pick one and lay it clockwise from the second card and below the first card. How does the

Universe suggest you manage the experiences or opportunities for growth that have come up this month?

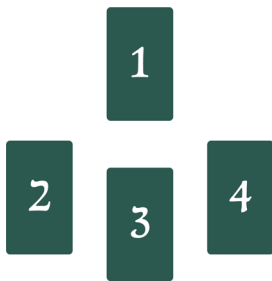
#### **4. *Last Quarter Moon***

Pick one more **Insight** Card and place it clockwise, diagonally below to the left of the first card. What is the insight you are gaining from this learning for the month? What needs to be integrated in your life for the learning to be complete?

## THE BIG GAME

Sometimes you can find yourself in a situation or recognize a recurring pattern and wonder “Why is this happening?” I love using this layout for giving me the Universe’s perspective on what is *really* going on.

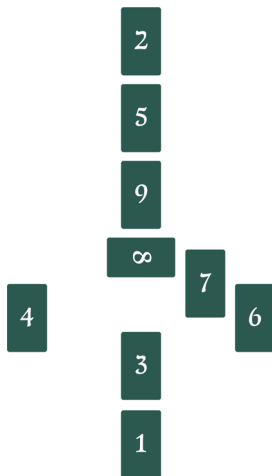
Shuffle all the cards together, thinking of the situation at hand and ask the cards to provide guidance. Stack and restack the cards as described above, and pick four cards, laying them out as follows. Read the questions below and turn over each card. Read its description as you relate its meaning to the situation.



- 1.** What does the Universe see for me? What is the big perspective? What is the bigger game I am playing here?
- 2.** Where am I being resisted? Where does this resistance come from?
- 3.** What is the attitude I could hold or action I could take?
- 4.** When I do that, what is the potential growth or the possible outcome?

## HUMAN DESIGN INSPIRED LAYOUT

Use this layout for those situations that require some serious processing. Think of issues in relationships or at work that may benefit from new insight. The layout follows the centers of the Human Design bodygraph. Each card reveals insight in aspects of the issue. The cards are placed in positions inspired by the Chakra System as follows:



Shuffle all the cards together, thinking of the issue. Ask the cards to provide guidance and insight. Stack and restack the cards as described, and pick nine cards, laying them out as mentioned. Read the general topic for each card and turn it over, reading its description as you relate its meaning to the issue.

1. What the issue is rooted in.
2. The higher wisdom or spiritual perspective.
3. The motivation you bring in.
4. What your intuition says.
5. What your beliefs say. What you really think about the situation.
6. What your emotions tell you. How you feel about the situation.
7. What you want to have happen.
8. What your environment reflects.
9. The outcome, what is to be manifested.



# *Foundation Cards*



## **ROOT**

The Root's powerful energy center supports you by bringing Life Force in from the Earth and pushing it upwards through your body. This energy helps you manifest your purpose in the world. You may physically

experience this as a pressure to move, whether that is through yoga, running or swimming, or perhaps even by moving in a big sense, such as relocating to a new home. The Root also provides you with a sense of grounding, balance and a strong foundation.

When this card comes up, it may be that an area of your life is out of balance and you could benefit from grounding. Stress has accumulated: what can



you do to release it? Meditate, take a walk in nature, or practice some deep breathing; all these can help restore a sense of balance.

You may also experience a sense of feeling stuck, as if you have not been able to move forward as fast or effective as you want. Practicing yoga or Tai Chi can gently help move the energy.

***Message:*** *The future is waiting for you to embrace your vision.*



## SACRAL

The Sacral Center modulates your physical energy and how you utilize it on a daily basis. It is the instrument for finding your flow, and provides the sustaining force for you to engage with the many tasks and activities of your day.

This area is also deeply creative and supports you in committing to new things. Additionally, the Sacral provides sexual energy and can be a source of sexual attraction for others.

When this card is pulled, you might ask yourself the following questions:

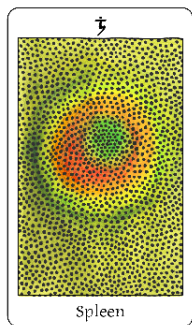
How am I using my energy? Is what I am doing sustaining me, or is it actually draining me?

Am I pushing past my boundaries? Where am I giving too much of myself? Which activities can I say 'yes' to?

Alternately, it may mean that something new has come onto your path. Are you ready to commit your energy fully?

Lastly, drawing this card may mean that there is a new sexual potential or partner in your life.

***Message:*** *Are you ready and willing to commit? To explore?*



## **SPLEEN**

The Spleen reigns our contact with the physical, material realm in which we live. Spleen energy signifies your health and physical safety in the world. It is connected with instinct, a quick, spontaneous way of being, and is related to the animal realm.

When this card shows up, you might be holding on to something that is no longer serving you. Questions you can ask yourself:

What am I telling myself to stay safe? Do I have a habit that has outgrown its use? Is it time to move to another home? Change jobs? Make a long overdue change in a relationship? What is it that no longer serves?

Perhaps you have a fear that holds you back from

seeing your future clearly. While this fear might *feel* real, there may be other perspectives out there that support you better. Use the Insight cards to expand on what might be below the surface.

The Universe has a bigger plan for you. Holding on to a particular way of being is keeping you from the magnificence She has in store for you.

This card also gently reminds you to take care of your health. Regular exercise, healthy foods, supplements, and time for laughter are all suggestions at this time.

***Message:*** *Trust that you are supported.*



## HEART

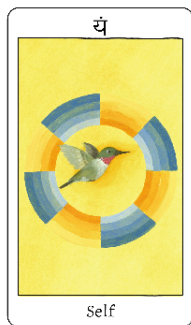
Your Heart is a powerful ally: it supports you with what you want and what you value in life. It brings a deep desire for freedom that emboldens your courage and determination to make things happen. This powerful force can

make mountains move, but only when you fully engage it.

When this card shows, it may be that you are not clear on what you *really* want in your life. Your deepest desire hasn't been uncovered yet, or it has been a while since you were in touch with what drives you. Ask yourself: What is most important in my life? What do I want more of? What makes me exhale, lets me drop my shoulders, and opens my heart when I think of it? What brings me the freedom I so deeply crave?

What does your heart say when you listen to that little voice inside? Deep in your heart you *know* what you want. It is time for you to pursue your dream.

***Message:*** *Go for it! Put your plan in action. It is time.*



## **SELF**

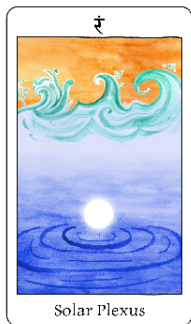
The Self Center connects you with your direction in life. It sends an invisible line way up high and connects you with your place in the Universe. Your Self is also the center of love and self-love, and aligns you with your Purpose.

Hummingbirds are messengers. When this card shows up, you are being guided into a new direction in life. Listen deeply, because your Purpose is calling you. What is it telling you to do? Where do you feel guided to go?

You may be feeling lost at this time, but you are exactly where you are supposed to be. Spirit is urging you to take care of yourself. A loving massage will do wonders, as will a change of scenery.

***Message:*** *Self-care is not a guilty pleasure, but a prerequisite.*





## **SOLAR PLEXUS**

The Solar Plexus signifies your emotional balance and speaks of a deep emotional sensitivity. Your emotions color your perspective: they are telling you how you see your world and often have a deeper message, telling you what you need to know. They infuse you with wisdom about the questions you need to ask to provide you with the answer you need, and the clarity to see the whole picture.

When this card comes up, an issue that has been on your mind is proving far more complex than you may be aware of at this moment. Fortunately, you have a depth of wisdom available that is waiting for you just below the surface. Tap into it.

Alternately, you may have been influenced by another's emotions: perhaps you are feeling more strongly currently than you might at other times. A calm, clear perspective is what is needed. Practice deep breathing to help balance your emotions. Take some time to check in with yourself. What do you really feel?

***Message:*** *Wait for strong emotions to settle, so you can see more clearly where to go.*



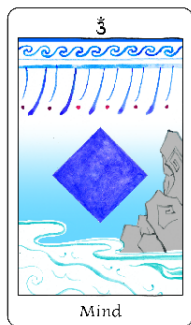
## THROAT

The Throat Center rules your self-expression. It is also the center of manifestation and supports how you make yourself manifest in the world.

You are asked to express yourself and show yourself more visibly at this time. What fear might be holding you back from manifesting your dream? The world is waiting for you to share what you know and believe!

When this card comes up, it may mean that something needs to be manifested. This card suggests to you to take care of what needs to be done. The Universe is supportive of your endeavors.

***Message:*** *When the right time is there, you will find that the Universe is behind you all the way and the right people will pay attention.*



## MIND

The Mind controls your thinking processes. It is an amazing information bank, able to gather and process all sorts of data. This powerful center can find innovative solutions to the most difficult problems. This has led to the fact that in the current

way of the world, people tend to want to make their decisions from the mind and focus on what rational thinking can bring.

However, relying exclusively on knowledge over the heart may steer you in the wrong direction in life.

When this card shows up, you are likely finding yourself confused, trying to find the answer to an issue in a logical way, perhaps even through making lists of pros and cons. However, too much thinking

leads to over-thinking. The truth will not come to you this way.

By seeing things from a distance, you allow your heart to work its magic. It can bring compassion to situations that are not clear, which provides the oil for things to settle. Meditate.

***Message:*** *Taking space will bring sudden clarifying insights, well beyond what the mind can conjure up.*



## **CROWN**

The Crown is your center of inspiration, it is where your Higher Guidance comes from. It opens you up to the awe and beauty of the Universe.

However, too much thinking can create static and confusion in this channel. You might even find yourself with too many possibilities to choose from. But no need to worry: new clarity is coming. Taking a walk in nature or going for a swim helps to reconnect with yourself.

This center supports you to give higher guidance.

Someone in your social circles may need your advice. Allow for the message to come through and wait for the right moment, and you will be present to a most transformative event.

Alternately, you have recently broken through old patterns and are ready for new guidance to come in. Pay attention. Don't force it. Be present.

***Message:*** *In silence, inspiration will find you.*

# *Insight Cards*

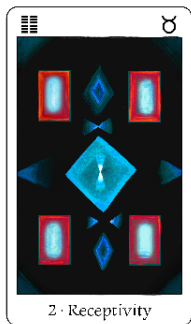


## 1 · CREATIVITY

Your inner Artist is being called forth to bring a new, innovative perspective into the world. Play, paint, mold with clay... It doesn't matter which medium you use. Each of us is creative in our own way. What is yours? Do you like to write poetry, or sing, or tell stories? Perhaps it is a less obvious creativity, which shows up in how you dress or act. Express yourself as only you can. Be ready for something new to emerge from your creative flow: an example that can empower others and potentially even transform lives. Allow your creativity to provide the way. Let yourself be drawn to do something out of the box.



**Affirmation:** *My creativity surprises and delights me. I allow my creative spark to reveal myself in new ways.*



## 2 · RECEPTIVITY

The connection between you and Spirit, the Universe, Goddess or however you name That Which Enfolds Us All, is suddenly more clearly present in your life. It's always there, yet, at this time you are more aware of it. New guidance is available for you: allow yourself to receive. It will come in the form of sudden inspiration, an inner knowing that is hard to explain. But things will no longer be the same. The more anxious and 'off your path' you thought yourself to be, the greater the potential transformation that is available for you! You are being guided.

**Affirmation:** *The Universe supports me. I am presented with the right people and opportunities for the Highest Good of All concerned.*

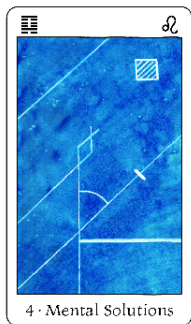


### **3 · BEGINNING**

This card is a messenger that a great change is at hand. You are being supported to begin something that will transform your life. This necessary change ultimately will leave you feeling empowered. Things have been

building and you may have noticed an internal restlessness and impatience. This was necessary to bring everything around you in alignment for what is now occurring. It may feel like you are going on a wild ride, but when the dust settles you will be in a whole different place. (Maybe even physically.)

***Affirmation:*** *What I see as chaos is the perfection of the Universe working in my favor. I am loved. I am safe.*



## 4 · MENTAL SOLUTIONS

Something has been on your mind, lately. This card shows that a clear, logical answer is available for you. You will find that you suddenly understand what can be done to solve the issue at hand. Just remember that no

matter how sure you are, a solution can only be a true solution once it has been put to the test. Only then is when you find out if it actually works or not! Recognize that there is a timing in when to share your perfect solution with others: you will find that a little compassion can go a long way to smooth any resistance. The Resolve cards will help you recognize when that timing is right, to share your answer, as each timing may have its own possible solution.

***Affirmation:*** *Today, I have clarity and move with compassion through my life.*



## 5 · WAITING

In our lives there is a right time for everything that occurs. You may be feeling somewhat off-track, however, the Universe is holding you in a different light. As nature has its seasons, the Universe has its own sense of timing. Its timing

is very different from the clock time we may follow. Tap into its flow. It may mean that for now you have to wait, but trust that you are in the perfect place, exactly where you are supposed to be. Trust that beyond your vision people and opportunities are gathering to support you. You will sense it when it is the right time for you to move forward.

***Affirmation:*** *I trust in the perfection of the Universe. I step into the flow with ease and grace.*

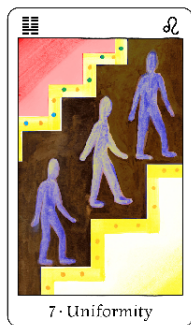


## **6 • CONFLICT RESOLUTION**

This card shows up as the peace-keeper. You may find yourself at odds with someone else at this time, or someone in your surroundings is in conflict with others, affecting you as well. Or, perhaps you are experiencing an

inner sense of struggle, a tug of war that is sapping your energy. You are requested to take on the role of mediator. What do both sides really want? Often we all want the same thing, but become attached to a particular point of view or a particular outcome. Breathe compassion into the situation: bring your attention to your heart and breathe compassion for yourself, as well as the other. The cards are telling you there is a better option available for everyone involved. What does your heart have to say?

**Affirmation:** *I bathe in compassion for myself and the other. My presence brings calm and ease for everyone involved.*



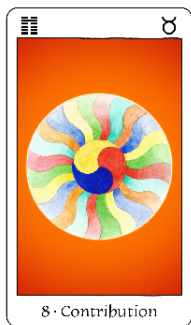
## 7 • UNIFORMITY

My Dear One, you are being called upon to stand up as a leader. You have the overarching understanding of the situation at hand. Your capability to plan ahead is needed here: you can see the many aspects of the situation

and the right actions to take. Don't be afraid. Step up and lead others into a new future. Pay attention to the kind of leadership that is being asked of you. Some situations require a more direct and hands-on approach, while others are more suitably guided from behind the scenes. The invitation to step up will come shortly; what do you need to be ready?

**Affirmation:** *The right situation will present itself for me to step up as the leader. I trust in my ability to lead.*



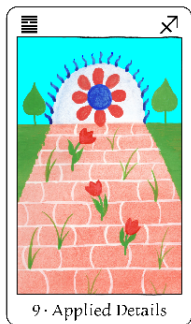


## 8 · CONTRIBUTION

A wonderful opportunity is coming your way! You will find yourself in the position to bring people together to support a common goal. Or perhaps you are the one supporting someone else's plan. Rest assured this plan has

the approval of the Universe. It has the potential to transform other people's lives, leaving them empowered. And you are a part of it! Whether you are aware of this or not, you may have a great role to play here, so be ready for things to suddenly and dramatically change!

***Affirmation:*** *I am a Divine instrument of the Universe, supporting and empowering others to live aligned with their Highest Self.*



## **9 · APPLIED DETAILS**

You find yourself in a place where you can see the future and all the details necessary to bring it into the present. Some patience is required of you now. The people around you may not see this future as clearly as you do. Allow the

pieces to fall into place, so that the complete picture is visible for everyone. This will ultimately make it easier for you to show the path you see emerging. With enough patience your questions might uncover the whole story.

***Affirmation:*** *I have all that I need to see the future and take action accordingly. My patience shows my caring.*



## 10 · BEHAVIOR

This card brings you the message of self-love. At this moment ask yourself: what is the most loving thing you can do to take care of yourself? You may find that you have drifted away from your Truth. If that is the case, it is now time to

take a stand for yourself. Find the best way to take care of *you*. You are walking a different path than others. They may not understand, and that is okay. As you walk your path as only you can, you become an example of self-love and care to them.

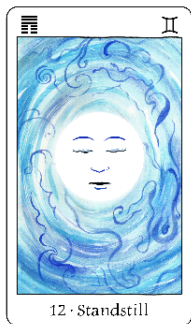
***Affirmation:*** *I am who I am: loved, unique and indispensable. I love my body and see it as the perfection that it is. My life is perfect as it is, right now.*



## 11 • HARMONY

This is a fruitful time in which many new ideas are emerging for you! These ideas have the potential to bring about harmony and bring opposite sides together. Sometimes, ideas come forth that are destined to be made real, bringing peace in the world. Which of your ideas have that spark, that tingling sensation you feel when the Universe is behind you all the way? These are ideas that need to be shared with others. Are the people around you ready to have their beliefs influenced? How you approach this situation can make all the difference. Stories are often much more compelling than advice...

***Affirmation:*** *Peace moves through me, today. I serve the Greater Whole.*



## 12 • STANDSTILL

Do not worry, my Dear One. It may seem that your world has come to a halt. You may feel stuck, as if the whole world is moving, except you. However, this is how it is supposed to be.

The Universe is supporting you with the time necessary for you to go inward. Light a candle, grab your journal... You are entering a similar process to the caterpillar when it has to go through its transformation. From the outside it may seem that nothing is happening... But wait and see. Soon, you will emerge from your cocoon like the beautiful butterfly, with an enormous jump in your personal evolution.

***Affirmation:*** *This too shall pass. I honor the rhythm of All that Is. I am open to my transformation to occur, effortlessly and joyfully, and in its own timing.*



### **13 • LISTENER**

Shhh... My Dear One; be still and listen. There is more to the situation than you may be aware of at this moment. This card is urging you to listen more deeply, so that you can discover that-which-is-hidden. Each of us has

our own stories to tell, but not many take the time to truly hear. Your listening plays a part in the healing of others. It will reward you by seeing the world with more clarity. Pay attention. More will be revealed to you soon. Quiet meditation will bring revelation.

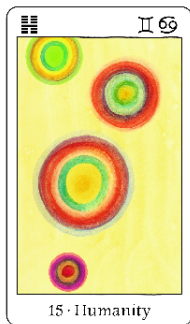
***Affirmation:*** *My inner wisdom shows me when to listen with my heart, my care, or my mind.*



## 14 · PROSPERITY

When this card is drawn great potential is at hand. Prosperity promises opportunities and resources to be moved onto your path. Whatever you are undertaking, it will emerge transformed, and better than you thought possible when you embarked on your journey. The changes you bring empower everyone you touch to transform their life. You are a true healer and way-shower at this time!

***Affirmation:*** *I am grateful for the abundance that shows up for me.*



## 15 · HUMANITY

What once was certain can no longer be counted on. Old routines are falling away, and you are in the process of finding a new way of Being in this situation. This may be an opportunity to get to know a different side of yourself, a new side that needs to emerge. If you pay attention, you'll notice that even Time moves differently for you now. Be flexible. Listen to your inner rhythm and rely on your inner sense of freedom. At this point in time, you will tend to resist others who tell you what to do. This is the Universe guiding you to listen to your Soul. It will tell you when it is time for you to take the next step. There are helpful people around you now. Guidance is only a smile or a question away.

***Affirmation:*** *Helpful people are plentiful in my life. I find my own path by listening to my own sense of Self.*



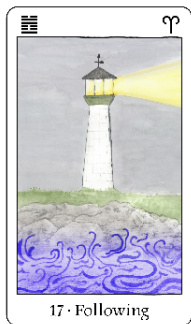


## 16 · SELECTIVITY

Your enthusiasm is marvelous and infectious, my Dear! It will draw in the people and even the resources you need to be successful, while your critical eye makes sure they are the right ones for the job.

Now is not the time to sit on your laurels, but to focus on building the skills necessary for a successful undertaking. Use your inviting energy to take step by step action: practice creates perfection! With time and the right resources, you develop the skills that will make your talent blossom.

***Affirmation:*** *I use my energy and attention to achieve the best results. I am supported by the Universe.*



## 17 · FOLLOWING

Sometimes, holding a strong opinion about something can actually hold us back from seeing the real issue. The Universe suggests you might try taking on a different perspective. After all, an opinion is simply a number of

facts arranged in a particular way. Rearranging those facts may provide you with a different solution. What situation is there that you can shine a new light on? What is true in this situation? Does it expand your sense of being, or does it make you feel contracted? You have such wisdom to share with others. What do you know for sure, that others can benefit from knowing as well?

***Affirmation:*** *I am open to possibilities. Life is a tapestry of many points of view that add beauty to the world.*

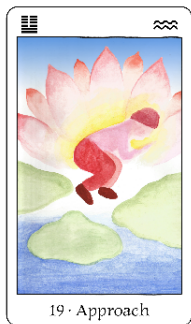


## 18 · IMPROVING

Be gentle, my Dear One. Something occurred in your life that didn't go as planned or intended. You are experiencing your inner critic, wondering what you should have done, or do, differently. While taking

responsibility is admirable, it is very likely that you may be taking things too personally. You are a kind person, a more amazing person than you might give yourself credit for. The cards advise to bring in a sense of compassion for yourself. Breathe it in. Be kind and gentle with yourself. The situation will be resolved, even if you don't know how, just yet.

***Affirmation:*** *I trust in the benevolence of the Universe. I am safe and I am deeply loved.*

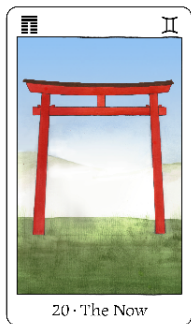


## 19 · APPROACH

It feels like someone ripped off the band-aid without warning. You are feeling extra sensitive at this time. Therefore, be extra gentle with yourself. Be with the ones that love and support you. It is okay to ask for hugs. You may find your

sensitivity heightened to such a level that you can even feel what others need around you, and you may find that you pay more attention to them than your own needs. There is a time and place for taking care of others. Don't forget that you also need to be taken care of.

***Affirmation:*** *I deserve to be loved and cared for. I am surrounded by people who love me.*

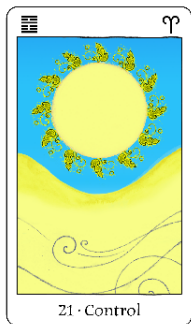


## 20 • THE NOW

Take a breath... and again. Feel yourself sitting in your chair. Your feet on the ground. Breathe deeply into the place where your back meets the chair. Allow your shoulders to drop to their original position.

“Now” is only a moment. It is *this* moment, and *this* moment is all we ever have. The situation in this moment is different from the situation of the past moment. Right now there is a possibility to transform yourself, your perspective, the way you are perceived. Take a moment to *be*: be present to what is. Let go of what was. Meditate.

***Affirmation:*** *I choose to be present to this moment and know that all is well in each moment.*



## 21 • CONTROL

You may be expecting perfection and therefore might experience a tendency to micro-manage the situation. Yet, forcing things into being is not what needs to happen right now. “Control” provides you with awareness of the situation.

How can you look at this situation differently and let go, just a bit? Try taking a step back and gently loosening your grip on the reins. My Dear One, you don’t need to let go all the way. Just taking a little more space can be enough for everything to fall into place. A little appreciation will go a long way.

***Affirmation:*** *I offer this to the Divine Wisdom of the Universe to manage for me. I trust that everything happens in Divine Timing.*



## 22 · GRACE

When Grace comes your way, you are offered the help of the Universe! Grace attracts the people and circumstances in your life that help you move further on your path. The Universe has got your back. Trust and let yourself be carried safely through anything on your path. Expect synchronistic experiences and new connections that will have special meaning for you.

***Affirmation:*** *I am Divinely guided on my path. Beautiful experiences are my Divine Birthright.*



## 23 · ASSIMILATION

All of a sudden, things are falling into place. Pieces of the puzzle are coming together, and you can expect to receive new clarity that transforms everything for you. You have a powerful role to play. Realize that in addition to *what*

you say, *how* you say it will affect others in a major way. At this time sharing what you know empowers the way people see things, which gives them new perspectives. What you bring to the world has the potential to change lives.

***Affirmation:*** *Today, I allow the voice of the Universe to speak through me and touch others in profound ways.*





## **24 · RETURNING**

An insight you recently had about an issue needs refining. It is not yet ready to be shared or followed up on. Like in the image, the Light from Spirit sent down to us doesn't quite touch us.

Information needs to go through a process of returning and refinement, until the moment is right and suddenly you experience an epiphany! You're advised to sit with what you know until its empowering potential is clear. Transformation happens in its own timing. Clarity is near!

***Affirmation:*** *I am patient, aware and available to receive clarity and Truth.*

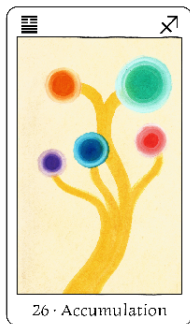


## 25 · INNOCENCE

This card invites you to see with new eyes. What if there was no hidden meaning, no one to pull the wool over your eyes? What if the situation is just as it seems, as it is being presented to you?

Innocence asks you to see love where you thought malice; care where you thought disrespect. It may be expressed in a way that is different than you would have liked or expected. There is love ready to be uncovered, Dear One.

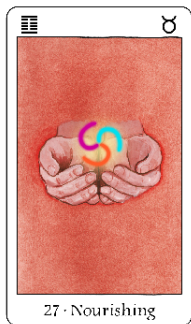
***Affirmation:*** *Today, I trust that Life is beautiful, that people are kind and that everything happens in my favor. I am Blessed.*



## 26 · ACCUMULATION

What is it that you really want deep inside? What do you wish were true? You are in the position of gathering the support necessary to move the pieces of the puzzle and make what you want to happen, happen. Before you do, ask yourself: is what you want also aligned with your integrity? Is what you want of value to others, too? If you can say yes to these questions and act from that place, the Universe offers Her support for what you want to achieve.

***Affirmation:*** *I am fully aligned in my integrity. I support the Greater Good.*

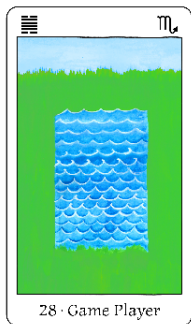


## 27 · NOURISHING

Your care is needed greatly at this time. In the current state of the world, people can feel lost, alone, overwhelmed. You can sense this and know what is needed to support them. As you give freely of what comes so naturally

to you, make sure your own reserves are plentiful and you give not more of your energy than you can afford. Realize that the thoughts you are thinking about yourself at this time may not be the kindest. Allow yourself to be nurtured only by those thoughts that reflect your Highest Self. Self-care is highly supported.

***Affirmation:*** *Today, I support others as I equally care for myself.*

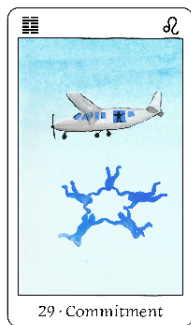


## 28 · GAME PLAYER

Dear One, what is your attitude towards your life? You are asked to dive in and partake in what life has to offer! New opportunities are waiting for you: are you ready? It's okay to take some time to weigh the circumstances of the situation,

but don't wait too long. Center yourself. Be present and you'll know when it's time to act. The cards are sending you the message that Life is calling and your participation is requested!

***Affirmation:*** *I am excited for the adventure that is ready to unfold. I am safe and open to what is next.*



## 29 · COMMITMENT

When commitment shows up, the cards are celebrating with a big 'YES'. New and exciting opportunities are coming your way! New ways that invite you to delve in and discover a whole different side of yourself: are you ready to jump in? Because once you commit, you'll need to follow the ride until the end. Use the Resolve cards to determine if this is the right time for you to commit to what is newly offered to you. If and when you do decide to jump in, the forces of the Universe are all in your favor!

***Affirmation:*** *I am blessed with new opportunities and expand my experience of myself.*



## **30 · DESIRES**

You are longing for an experience that will change everything. Something that you can share with others. What is it you so deeply desire? Is what you so deeply want also worth it? You are asked to question your expectations.

Will the experience that you are longing for live up to them? Sometimes an unfulfilled expectation can become an obsession if entered into incorrectly. The Resolve cards can help you determine what or whom to get involved with. Or not!

***Affirmation:*** *My longing shows me opportunities for growth. Instead of going outward I choose to go inward.*



## 31 • INFLUENCE

The Universe is shining Her light on you! You are entering a time in which you have the potential to be influential and change the outcome of certain situations. The way you speak and what you say will make others pay attention to you. Bring your awareness to the people around you: without forcing anything, you have the natural ability to make people understand your point of view. You are asked to step into the leader that you are.

***Affirmation:*** *I am grateful for sharing my guidance with others. The Universe moves through me.*





## 32 · DURATION

It is said that the only constant in life is change. There is a shift in the air: are you paying attention? What has been moving along in one way is suddenly changing direction. This can be a work situation, a relationship or even

your health. How can you take advantage of what this new shift brings? We live in a friendly Universe where everything we do is happening *for* us, even if it doesn't look like it initially. Where does your attention go? Are you focusing on the Highest Good of All? There is a great opportunity here for you to increase your spiritual or material growth.

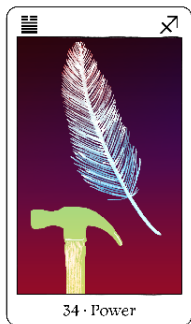
***Affirmation:*** *I am open to the abundant flow of the Universe in all areas of my life.*



## **33 • RETREAT**

My Dear One, pushing forward is not going to help you now. It is time to go inward. Allow yourself to process and let percolate all that has happened recently. You may have overextended yourself and now you need time to take care of you. Inside, you hold the key that provides answers to other people's challenges. You share your wisdom in the form of stories that bring others a new perspective, potentially changing their beliefs. But for now: rest. The time for new stories will come soon enough.

***Affirmation:*** *My inner world is peaceful. I surrender.*

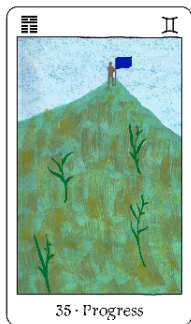


## 34 · POWER

You are entering a period in which you have access to great, sustaining power to make things happen! It is a strange thing with power: how do you wield it successfully? Sometimes a spoonful of honey has a better

result than a hammer, yet sometimes the hammer is what is necessary to drive the nail into the wood. When power is in play, determine the situation, the player and the desired result. You have what it takes, now wield it with care.

***Affirmation:*** *I fully step into my power. I use my power to serve in the Highest Good of All.*

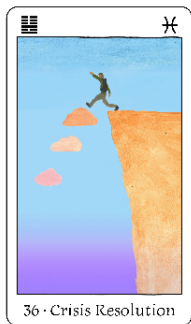


## **35 · PROGRESS**

You have great gifts to give to the world. Your yearning for new experiences is bringing you into situations and opportunities that others only dream of, and it has given you the opportunity to develop many talents. And now,

Dear One, there is new learning waiting for you to be uncovered. Be mindful of expectations, the world often has its own way of showing up. Stay curious and be present to what is. Once you've had the experience, you'll be done; there is no need to go through it ever again. Allow yourself to receive the learning, say 'thank you' and move on. Others will benefit tremendously when it is time to share this valuable understanding.

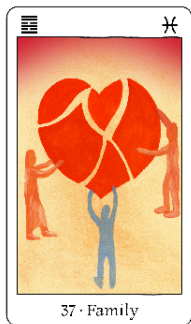
***Affirmation:*** *I am excited to discover what is next in my life. I am open to experience what is ready to unfold.*



## 36 · CRISIS RESOLUTION

Like the Fool card in the Tarot, you are standing on the edge, about to leap into the void. It may feel like a crisis: that feeling you get when you are about to jump off a cliff without a safety net to catch you. But if you find yourself here, it all but assures that you can manage whatever has come on your path. We are only presented with those opportunities for growth that we can handle, however challenging they may seem. It has been said that Fear is just Excitement without the Breath. You are lifting up humanity with what you are going through. Sharing about your learning will be of support to others.

***Affirmation:*** *Everything that happens in my life happens to serve me, not to spite me.*



## 37 · FAMILY

Your family's wellbeing is especially important to you at this time.

Loyalty is at the heart of the issue.

You are being asked to review who and what you are loyal to.

Loyalty makes sense when there is an agreement, a give-and-take,

that supports both parties. The cards are asking you to determine if your loyalty is well-placed. Are you receiving as much in return for the care, friendship and support you have been giving to others? If there is an imbalance, now is time to discuss and make new agreements that support you as well.

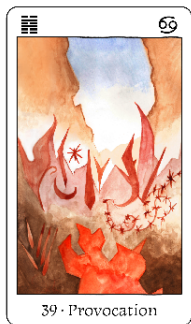
***Affirmation:*** *I am supported. I deserve and allow the abundance the Universe has to offer.*



## **38 · OPPOSITION**

When opposition comes into your life, you are asked to take a stand. You are experiencing a pushback from someone; outside forces or old thought patterns that want to maintain the status quo. However, you are a harbinger of new, innovative change. Something connected to your Purpose is seen as a challenge to the old ways. Take a stand, Dear One! If you choose your battles wisely, ultimately this will bring you more freedom to be yourself, and serve to empower change in others.

***Affirmation:*** *I take a stand for my own freedom, and by extension, that of others.*



## 39 • PROVOCATION

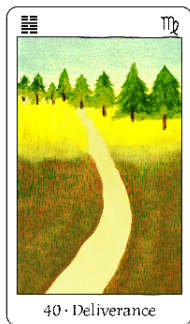
It may feel like sudden irritations are springing up out of nowhere. These may appear as a sudden flat tire, or unexpected traffic jams when you were already pressed for time. Irritations with coworkers or even strangers can occur. It

may not seem like it, but the Universe is actually on your side. You are receiving a compassionate nudge to lighten up and release something that has been rubbing you the wrong way underneath your awareness for quite a while. What can you let go of? There is an opportunity for growth that is being offered to you. Some deep unresolved hurt from the past has come up to the surface to be reviewed and processed. The more you feel these provocations working in your life, the greater the opportunity for deep healing. Practice deep compassion with yourself. As you are more kind and gentle with



yourself, outward challenges disappear and flow will be restored.

**Affirmation:** *The Universe holds me with care, so I can see what needs to be seen. I bathe in the energy of deep compassion.*

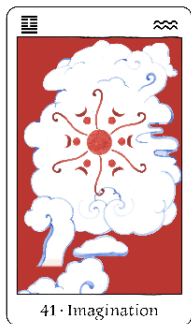


## 40 • DELIVERANCE

Are you giving too much of your time and energy to others? You have worked so hard, but is it for what you want? Is it giving you the freedom and space you so desire? The cards are telling you to take care of yourself. It is time for

you to rest. It is okay to be selfish. Take the day off, restore your body, mind and spirit. Soon there will be another opportunity to engage and give your mighty power to. But for now, Spirit calls for you to rest.

***Affirmation:*** *Today all day, I embody Freedom. I am free to make my own choices, and am free to do what makes my heart sing!*



## 41 • IMAGINATION

Many a new adventure started off from this place; that place where once was nothing. This “nothingness” relies on the use of your imagination, so that it can become “something”: a vision to move toward. Your ability to see

something new, something of value that wasn’t there before, is strong at this time! You are being called to a new experience and to share it with others. You are the one who has the vision. Let it draw you in and pull you forward. Steep in it, until you know exactly how and what it will be like. Then go forth and make it a reality, once the timing is right!

***Affirmation:*** *I am divinely inspired! I see the potential that the Universe desires for me!*

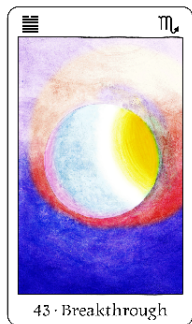


## 42 · INCREASE

This is the time to take on some old project that has been waiting on the sideline. Or perhaps you are being offered to take over a project from someone else. You have the energy and ability to move it further, increase its

potential and improve whatever it is you put your hands on. But before you do, make sure it is in alignment with what you truly want *and* that you benefit from the results. You deserve it!

***Affirmation:*** *Wonderful new opportunities are possible for me. I deserve the bountiful potential that they bring.*



## **43 · BREAKTHROUGH**

Be ready for a sudden inspired insight to rock your world and transform your current perspective. It is that goosebump moment in which you just *know* what is really going on, and suddenly things become crystal

clear. Instantly, you will know what needs to be done. This can be an empowering moment for both yourself and others around you. However, there is a difference between knowing something for yourself and actually voicing it to others. Some people are not ready to have their world shifted, so the Universe is asking you to have patience with them... You'll know it when the time is right. This insight might come in conversation with others, so pay attention to what you hear yourself say: you may surprise yourself with the Divine Truth you are voicing!

**Affirmation:** *The Universe speaks through me. I am in the flow of Divine Knowing.*



## 44 · PATTERNS

You are currently in the flow to connect with others easily. Making friends comes naturally to you at this time. Conversation is quick and effortless, and you are enjoying others more than you usually might. Count on having an

immediate, deep sense of whomever you are meeting. Expect networking to expand your work or business to be very fruitful. Possible collaborations and partnerships can happen that will move you forward on the material and potentially spiritual plane. Your naturally intuitive insight in people is also heightened: you will know who to trust, or not.

***Affirmation:*** *I enjoy the connections that the Universe makes available for me. I enjoy connecting with everyone I meet.*



## 45 • GATHERING TOGETHER

You are like the magnanimous ruler who reigns over your people. Whether these are your family, friends, customers, or clients, you find that you generously provide the resources needed for your tribe or community to flourish.

In this case, the Universe shows you have something to give that is needed by someone, or even by your larger community. It might be your time, knowledge or even material possessions: share it to support those in your tribe who can benefit from your benevolent reach.

***Affirmation:*** *I generously support those who need it, because I live in the abundant flow of the Universe.*





## 46 · SERENDIPITY

You are blessed! Expect new opportunities to call you, to bring good fortune and favor. Forward movement is possible where once you felt stuck, and bring you new experiences to lose yourself into.

You are being asked to evaluate how fulfilled you are in your endeavors. Pay attention, take good care of yourself, your health and your attitude. Good news is on its way to you to expand your existence! Be ready and allow yourself to receive and fully enjoy the experience.

***Affirmation:*** *I am worthy of receiving the wonderful opportunities that are in store for me. I am deeply grateful!*

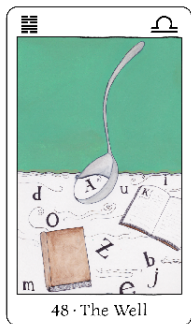


## 47 • REALIZATION

A new realization wants to come in that will help you make sense of a specific situation. Trying to force an outcome by thinking or obsessing about it won't help. Allow yourself to 'not think' about it for a while. Do you know why

many people have amazing ideas while they are taking a shower or a walk in nature? Your mind will continue to massage the issue while you are not paying attention and suddenly something will become clear! You have done your best. You have tried to get the answer in a logical way, but this situation calls for out of the box thinking. Do something different this time. Meditation and distraction lead to clarity.

***Affirmation:*** *I trust in sudden revelations in Divine Timing. Understanding is near.*



## 48 • THE WELL

It is time to go back to school!  
Whether it is an actual study or simply picking up a book on a subject you have been wanting to learn more about, the Universe is telling you it is time to focus on deepening your knowledge. More

information will prepare you to see upcoming changes in a new perspective and be ready to experiment and develop something better than you thought currently possible. Enjoy refreshing your knowledge!

***Affirmation:*** *I delve into new information with enthusiasm. Everyone benefits when I share what I have learned!*

## 49 • REVOLUTION



Out with the old, in with the new!  
The rebel in you wants to make a change. The cards are supporting a dramatic shift: revolution often starts with a strong ‘No’! This is a moment in which you get to take your time and decide what it is

that *you* truly need. This may be the time to review your relationships. You get to determine who is part of your tribe, who you want to align yourself with and even who is no longer part of your community. Step into the power of ‘no’. You may be experiencing some chaos, but this is temporary and makes space for a welcome change.

***Affirmation:*** *Life is my inspiration. The right ‘no’ opens up new possibilities for everyone.*

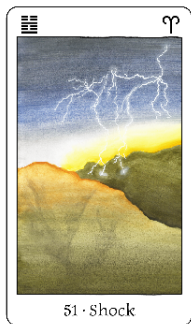


## 50 · VALUES

Your life is often spent in service of others. However, when you receive this card, something in your life may be out of integrity with something that is important to you. Ask yourself, “what do you value in your life?” Are your

friends and family aligned with and supportive of your choices? Are you feeling out of balance, giving in or giving more than you are comfortable with? Check your inner compass and how that lines up with whom you spend most of your time. Maybe there is an adjustment that is needed, either inwardly, or externally, or perhaps it may be time to find a new community that supports the same values as your own.

***Affirmation:*** *My integrity is the guiding light which shines on what I hold dear in life.*



## **51 · SHOCK**

Something came as a shock to you, or perhaps you created a shock for others. Either way, this is an opportunity to re-evaluate what is happening. You are given a chance to realign yourself with your Purpose and what you are here to do. Know that you have the courage to do it. Often the times in which great changes happen are the ones that suddenly make you aware of the beauty of life and what you truly value. This may also be a time of more mystical awareness. Know that even if you feel lost, the powers of the Universe are supporting you and helping you walk your path. You are so loved!

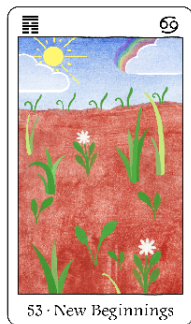
***Affirmation:*** *I am present to the spiritual and material realms guiding me on my purposeful path.*



## 52 · MOUNTAIN

This card brings a stillness with it, an inner sense of calm to be brought into your life. You have been moving so fast... It is time to sit, be present to yourself and the future. Imagine yourself on top of a mountain, quietly overlooking the world. No sound. No distraction. Just the cool, clear sky. Meditate, move with yoga or Tai Chi, take a walk in nature. Allow inner stillness to be in you.

***Affirmation:*** *I feel grounded. I am calm.*

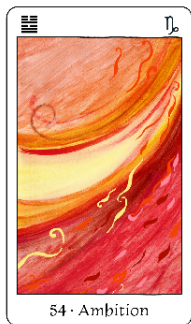


## **53 • NEW BEGINNINGS**

You are finding yourself in a period of beginning new things. It may seem that many of them are false starts: new endeavors that are not quite taking hold. This can feel quite frustrating, because there is such a pressure to set things in motion! However, even though it may seem you're not getting anywhere, you are actually preparing the way for something new to come into your life. Don't worry about the things that don't quite work out, or are running out of steam. They, too, have an important role. Sometimes this is the way for the *new* to be brought into the world. Trust that the ideas with merit will stick. The Resolve Cards will help you how to recognize which ones to focus on.

***Affirmation:*** *Everything I do leads me to the next step. I am following the flow of the Universe. I am ready to bring in the new.*



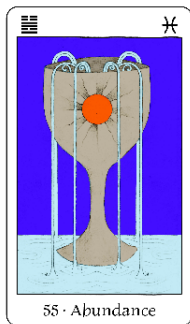


## 54 · AMBITION

You are experiencing a drive to move up in the world. The Universe is supporting you to express yourself in a new and bigger way. This may include more visibility, more responsibility, a new and expanded network, etc. Much

is possible for you now! Always remember to stay in alignment with your integrity, so that the steps you take now will bring you the highest results: mentally, spiritually and materially.

***Affirmation:*** *I am fully supported by the connections and alliances that are right for me. I am invited to express the highest version of myself!*

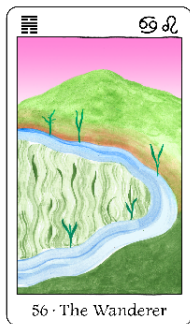


## 55 · ABUNDANCE

A time of abundance is opening up for you that can catalyze deep transformation! You may feel that your emotions are heightened and may experience both sides of the coin (and more). All these up-and-down feelings have a purpose.

They bring color to your life and provide energy that draws others in. Trust that you are supported by the Universe: success is near. If you feel down, let the muse come out to play: be creative, paint, listen to music. Inspired actions will become clear with sudden impulse. Watch and be ready.

***Affirmation:*** *I am excited to be surprised by the Universe. I can hardly wait for Spirit to show me the abundance that is waiting for me. I am open and I receive in gratitude.*



## 56 • THE WANDERER

You desire to experience something new: a change of scenery or perhaps even a new course of study. Fresh perspectives are calling to bring new color to your beliefs. While a certain restlessness is exciting,

too much of it can make it difficult to form a clear understanding. New pathways are out there for you; take your time, don't go too fast. You might dismiss a new opportunity to view a situation too quickly, and throw the baby out with the bath water on your way to the next distraction.

***Affirmation:*** *I am open to new perspectives. I recognize the new opportunities that serve my highest good.*



## 57 · INTUITION

Another name for this card is “the Gentle”, because it gently prods your intuition to pay attention to your environment. During this time your intuition is heightened. A new awareness is opening to receive unexpected insights.

These can come in the form of a sudden knowing that something is amiss, or you might receive a new perception into a situation that was previously unclear. Pay attention. Heed your inner voice, it is guiding you to meet the people and opportunities that are meant to help move you forward. This can be an exciting time that will make you feel empowered and which has the potential to be life changing.

***Affirmation:*** *I fully trust my intuition and act on it.*



## 58 · JOYOUS VITALITY

A spark of joy enters to light up your life! New energy is available to infuse your endeavors and bring extra spring into your step! Expect a flow of positive energy to usher in new potentials and opportunities. This is a time to

focus on what brings you joy in life. Your energy is infectious, others will love sharing time with you.

***Affirmation:*** *Joy bubbles up in unexpected moments! I am full of gratitude and I freely share my joy with everyone around. My love of life is overflowing!*



## 59 · INTIMACY

What is intimacy? Yes, it can be sexual, but it goes much deeper than that. True intimacy is a closeness, a profound emotional connection with another human being. Intimacy requires vulnerability. When you draw this

card, you are asked to reveal something of yourself, perhaps more than you have ever shown others. How far do you dare to go, to truly learn to know someone? Are you willing to show them *all* of you? There is a contradiction: however scary it sounds, real vulnerability shows strength. It draws others in who are longing for authenticity, just like you. Be bold, be brave, dive in.

***Affirmation:*** *I revel in the connections with others. I share myself authentically.*

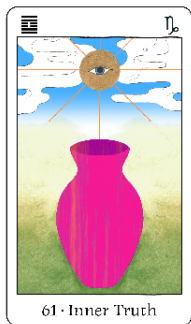


## 60 • LIMITATION

Prepare yourself. You are about to embark on a journey, which requires you to be organized. Maybe it means decluttering your space, or organizing your finances. What is it in your life that could use some rearranging or a clear

overview? You are preparing yourself for a new phase in your life, a change that will be happening soon. Yes, things will be different, however, the more you are prepared, the stronger your foundation will be and the greater the potential for transformation!

***Affirmation:*** *I am clearing out the old to prepare for the new. I am grounded and ready for what's next!*

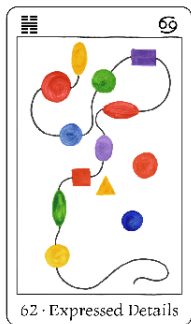


## 61 • INNER TRUTH

The Universe is ready to share with you some revealing Truths (with a capital T)! Your mind will be very active over the next few days. Be open and available for flashes of new insight to appear. They will change your perspective, inspiring you to your core, empowering you to a whole new way of being. You may recognize them by the sudden goosebumps you may experience all over your body. Don't try to force these Truths to appear; they will reveal themselves on their own accord. Worrying will only get in the way of receiving these insights clearly.

***Affirmation:*** *I am fully inspired by new insight flowing through me. I am open to Universal Truth.*



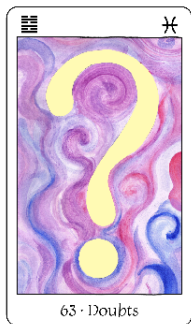


## **62 · EXPRESSED DETAILS**

This is a request for details. Something has been on your mind and the Universe suggests you take another careful look at the situation. Something seems hidden, not made clear. Do you have all the details available? There

may be someone who holds additional information, which might change how to best handle the situation. Pay attention to the small things. When you organize things logically you will bring clarity for everyone.

***Affirmation:*** *I see the situation logically and with a clear understanding.*



## 63 · DOUBTS

Having doubts about something? That is actually a blessing! Doubts make you look twice and ask yourself, “what if?” What if this situation could be different? What if you had all you needed available to make changes, what would your

life look like then? Doubts have come into your life to show you that something is not quite right and to expand your perspective. Many new futures are possible for you now. A Resolve card can help show you how to recognize the new perspective that is right for you.

***Affirmation:*** *I recognize necessary changes. I am open to new solutions.*



## 64 · DIVERSE POSSIBILITIES

You are presented with an opportunity to find meaning in something from your past. There are so many possibilities available, that you may find yourself confused by the sheer number of them! The Universe suggests

that you release the mental pressure of trying to make sense of it all. No need to feel stuck or force an outcome: there are many options ready for you to be seen, and each will give its own answer to your quest. Patience is required. Meditate. Trust that a realization is bound to happen and suddenly all will make sense!

***Affirmation:*** *I trust that understanding will become clear in time.*

# Resolve Cards



## DRIVING FORCE

**Element: Fire**

What do you really want? Believe it or not: what you want at this time also happens to be best for others. You are here to catalyze a change. In our lives, change is not always received with appreciation when it happens. It can bring up fears that people feel they need to defend themselves against. It takes time for others to accept the *new* that you see possible, and see it as ‘normal’.

You may not see how it will all turn out, however, trust that ultimately your community is supported. As long as you come from your integrity, this change is something that needs to happen. Use the fire of

the amazing willpower and determination you have at your disposal at this time to move forward toward success.



## **TRUST YOUR GUT**

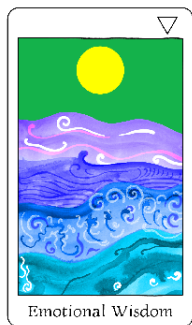
**Element: Earth**

Inside of you lies an awareness that knows what is right for you. It offers you assurance with a direct connection to your inner truth. This is your gut. Pay attention: what does it tell you? Your gut responds either with 'yes' or 'not now'.

Stand up and close your eyes while practicing this technique: breathe deeply, think of your question and check your gut. You may feel this as a lightness for 'yes', or a heaviness or sinking feeling if it is not right for you at this time. Or, 'yes' may come as a sense of being pulled forward, towards that what is available, while 'not now' may feel as if you are being pushed back.

Is it time to take action? Do you need more information? Do you feel clear? Or do you feel worry

or anxiety in your stomach? Trust your gut. You have your answer.



## **EMOTIONAL WISDOM**

### **Element: Water**

The cards are advising you to wait: It is not quite time for action yet. How do you really feel about the situation? Your emotions color your perspective and you may find that as your feelings change, so

do your thoughts about the issue. With each shift of emotions there are different questions to ask.

Take your time to go through your process of feeling all the different sides of the issue. This will ultimately allow you to gather the information you need to make a decision you are comfortable with. As long as you feel anxiety in the pit of your stomach, the time is not right for an answer, yet. Wait and clarity will come.





## INTUITION

**Element: Air**

What does your intuition say? At this moment in time your intuition is heightened: it is as if a soft inner voice is whispering to you. Listen deeply, what does it say?

There is a quick, instinctive knowing that wants to come through. Do you have goosebumps, or feel a sudden shift in the energy? The more you trust your intuition in the moment, the clearer it will sound. Then it is time for taking action.



## **INNER WISDOM**

**Element: Diamond**

You are aligned with an inner sense of direction: your purpose is pulling you forward. Like diamond, internally you possess perfect clarity: tap into it. For a moment, close your eyes. Bring your

attention to the center of your chest, where your heart resides. Take a deep breath and think of your situation. Now one by one, let each of the potential solutions pass in your mind's eye. With each solution, ask yourself, "Does this make my heart open?"

Does the solution pull you forward? Does it make you feel expanded? Or do you have a sense of being pushed back? Does it feel like your heart closes or do you feel contracted? You have your answer...

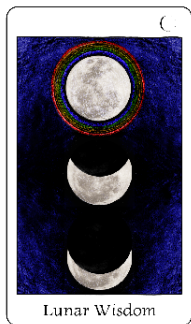


## OUTER WISDOM

**Element: Ether**

You may have all the information you need, but you do need time to process. You do this best through talking it over with people you trust. It is important to remember that it is not your friends' advice you are seeking: instead *listen to yourself*.

Listen to how you speak about what's on your mind. What do you hear yourself say? How do you approach the issue? What does that tell you? Let your own wisdom be reflected back to you, so you can make your decision with confidence.



## **LUNAR WISDOM**

**Element: Moon**

You are entering a deeply sensitive phase right now, one that will bring insight and have meaning for you for years to come. When you draw this card you are advised to take time and listen deeply to yourself.

As the moon moves through its phases, so you'll find that you encounter new perspectives. You will experience different ways of approaching what's on our mind.

Watch for signs from the Universe: It is showing you what you need to know. Coincidences, appearances of animals, 'unusual' happenings all have a deeper meaning now. Mark where you are in terms of your thinking as you go through the cycle and you'll find you'll be in a different place when you come to the end of it.



# *About the Deck*

## **ABOUT THE AUTHOR, MARIJE MILLER**

This Oracle came into being from my life-long interest in the Tarot and various oracles, and my almost 20 year experience in coaching and Human Design. Many years ago, as a young teenager, I received my first deck: a set of Lenormand cards, as a prize at a traveling carnival. I was hooked, trying to discover the future, which felt very uncertain. I was going through a phase of many changes within myself and at home, and I was hungry for anything that could give me more insight in myself and my potential future. The Lenormand cards helped me navigate my teenage years with more trust and confidence (especially where potential love interests were concerned!)

My journey led me to learn about the Tarot, as well as Astrology, the I Ching, Runes, the use of a Pendulum, and other forms of divination. My love for the Tarot expanded over the years to where I now have quite an extensive collection of Tarot and Oracle decks. Each deck has its own flavor and meaning, which often relates to a specific phase in my life, or perhaps a particular mood, and I still change my use of a particular deck when my intuition tells me to do so!

In 2004 I was introduced to a new body of wisdom called Human Design. Encountering this knowledge felt like a lightning bolt out of the blue. It resonated so much that I was pulled to dive in deep. My first reading left me feeling truly seen for who I am and what I have to contribute in the world. I was passionate to learn more, and I eventually became a Human Design Practitioner and teacher, as well as BG5 career and business consultant, and now offer readings, classes, and coaching on Life Purpose,

Direction, and career. Many of my clients report that they feel truly seen after their first reading, just like I did.

Many clients develop a fascination with Human Design and go on to learn more, however, the information is vast! My goal is and has been to make this system more practical and approachable, so you get to live in alignment with your purpose more quickly and easily.

In the summer of 2019 I woke up with a *knowing*, and for several days I had a download, a vision really, on how to create a set of oracle cards inspired by Human Design, integrating wisdom of the Chakra System, I Ching, and Western elemental knowledge into a practical application that has become the Gates to Soul Wisdom Oracle.

There are several ways to use the cards (see section on layouts), however, each layout is meant



to engage with your own intuition, to give you understanding, or perhaps show a new perspective on a pressing issue, and to present a possible solution or a way to manage the situation.

Please realize that the solution offered is only one of many possibilities. We live in a friendly Universe, where everything happens *for* us, never *against* us. We are co-conspirators and co-creators, choosing (consciously or often unconsciously) our next action, that puts our newest future in motion.

Quantum physics shows us that our future is in motion until we observe it. The implications of this are incredible. Each time we make a choice (and we make choices many times a day) our choice becomes the starting point for a new future to unfold. That future path continues until we make another choice, altering the course to yet another future. As such, we have far more influence on how our lives turn out than we tend to give ourselves credit for. We are far more powerful than we think!

My hope is that you enjoy the insights this Oracle can give you and foremost, that you deepen your trust in your intuition: when you follow it, you connect directly with Spirit, and in that moment you have freedom to create your own future.

*“You are today where your thoughts have brought you. You will be tomorrow where your thoughts take you.”*

- James Allen

*“Between stimulus and response there is a space. In that space is our power to choose our response. In our response lies our growth and our freedom.”*

- Viktor Frankl

## **ABOUT THE ARTIST, TIMOTHY EYES**

Timothy Eyes has studied multiple artistic disciplines since a very young age and continues to explore new creative pathways. He is a student of

traditional Buddhist art, as well as woodworking, photography, and a variety of other modes of creation. Originally from Santa Cruz, CA, he now lives in Santa Ynez, CA.

This collaboration with Timothy Eyes has been amazing. In the process of discussing each card's meaning, Tim continually surprised me with his intuitive grasp of the card. His inspired execution of the images made a vision into reality. I am so grateful to know him and work with such a talented artist.

## **ACKNOWLEDGEMENTS AND RESOURCES**

In my discovery of the Human Design System I am deeply grateful to Ra Uru Hu, who was instrumental as the first person in channeling and spreading this information from the Being he called The Voice. Others who taught me over the years include Lynda Bunnell, who gave me my first reading,

Karen Sherwood, Zeno, Karen Curry Parker, and Richard Rudd.

My profound gratitude goes to my mentor Chetan Parkyn, who with his wife Carola Eastwood influenced my integration and experience of this knowledge by infusing the Ray of Love back into Human Design. Chetan's *Book of Lines* (available on Amazon) provided the names used here for many of the cards. He reminded me that our world and its religions and wisdom systems, including Human Design, continue to evolve.

Additionally, there are a number of people who have listened to me as I excitedly shared about this project, seen the work at different stages, and given their feedback. Here are their names in no particular order: Shannon Brown, Lucia Pavone, Xenia Madison, Shannon Belfaust, Molly Mandelberg, Sue Wright, Anne Sagendorph-Moon, as well as my clients, students and class participants, and the many Thrivers

who voted for the cover! (Thanks to you there are now *two* covers!) A special *thank you* to Beth Love, Lori Jones, Shelley Beek and Lauoa Grace: I'm so blessed to know you and so grateful for our weekly calls!

I want to thank Jana Busbin for her great graphics design skills, and to Summer Wen of WJPC: you made this process flow so easily. I appreciate you!

To my Backers, thank you, thank you, thank you! Without your support it would have taken much longer for the Gates to Soul Wisdom Oracle to see the light.

To my family: thank you to Mycah Miller, whose enthusiasm, support and love are boundless, and to Ayla Miller for her joyful spirit, innovative ideas and love. You both are my world. Thank you to my mom, Ank Borkent, my brother Mark Achterberg, his wife Christel and sons Bent and Jelte: your

support during our weekly updates over Zoom has been so appreciated! Thank you, too, to Jan Rutger Achterberg, for your encouragement and regular fun updates to keep things real; to Nick Eyes, who is just as talented as his brother, and last but not least to my husband, David Eyes: your support (for this project and otherwise) has been invaluable on so many levels. Darling, I love you and I am so grateful for you in my life.

It is my wish that you enjoy the card deck and its messages and connect with that deepest part of you, where Spirit aligns with the Universe, and brings love, trust and ease into your life.

To receive your free Human Design chart, updates on card layouts and to learn more, please visit **[www.connectingnewdots.com](http://www.connectingnewdots.com)**.